

SightSensor HD

Thermal-Visible Smart Camera



Dual-Video Detection Camera for Outdoor Security

The SightSensor HD is a dual-video smart camera that detects intruders with high accuracy and low nuisance alerts at commercial outdoor sites. SightSensor HD combines a thermal sensor, a high-definition color imager, onboard video storage, automatic stabilization, built-in LED illumination, integrated video analytics, and thermal AI nuisance alarm filtering into a complete 24-hour security solution.



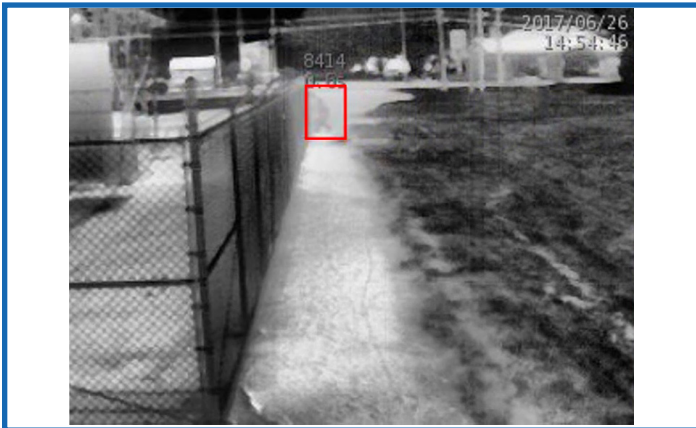
FEATURES

- ✔ Detects, rejects and validates thermal & visible activity in real-time
- ✔ Thermal and visible sensors in one device
- ✔ Tight integration with VMS & alarm automation software

BENEFITS

- ✔ Higher detection performance and lower false alarms
- ✔ Reliable daytime and nighttime security
- ✔ Works seamlessly with existing systems

THERMAL



Detection red box also displayed on color video

HD COLOR



White border indicates thermal detection zone

ACCESSORIES

Mounts

Wall and pole mounts available. Refer to the *SightLogix Accessories* datasheet

SightMonitor II

Target display and site management software. Refer to the *SightLogix SightMonitor II Datasheet*

SightTracker PTZ

Smart AI people tracker for outdoor sites. Refer to the *SightLogix SightTracker PTZ datasheet*.

ORDERING INFORMATION

Part Number	Inbound Detection	Detection FOV	Visible FOV
HD260-220*	75ft (25m)	60°	71.5°
HD236-220	138 ft (42m)	36°	51°
HD220-220	262 ft (80m)	20°	27°
HD355-220	151 ft (46m)	55°	71.5°
HD332-220	246 ft (75m)	32°	40°
HD324-220	328 ft (100m)	24°	27°

Detection distance will be further if person is moving across the FOV
*NIR Illumination not included with HD260

Equipment described herein is subject to US export regulations and may require a license prior to export. Diversion contrary to US law is prohibited. ©SightLogix, Inc. All rights reserved

PN 6-2000015-030
Dec 2023

745 Alexander Road | Princeton, NJ 08540
p +1 609.951.0008 | f 609.951.0024
www.sightlogix.com



Specifications

✓ Thermal Imager

Thermal Detector

Un-cooled VOx Microbolometer 8-14 micron

Resolution

206x156 or 320x240

Dynamic Range

14 bit digital sensor interface

Aspect Ratio: 4:3

Sensitivity (NETD): <60mK at f/1.0

Frame Rate: Up to 15 FPS

Video Output: H.264, MJPEG

✓ Video Analytics

Video Analytic Rules

Dual-Sensor Analytics (DSA), Motion Tracking, From/To Zones, Target Size Filtering, Wrong-Way Direction, Loitering, Object Left Behind, Speed, Time of Day, Mask Zones, Shock Detection, Privacy Zones

Thermal AI Filter Options: "None", "Everything Except Person and Vehicle," "Everything Except Person," "Everything Except Vehicle".

Onboard Storage - Built-in microSD slot (card not supplied; high-endurance cards strongly recommended). Stored clips accessed via web browser.

Communications

Metadata via industry standard XML over a HTTP/HTTPS interface for 3rd-party integration

✓ Electrical

Power Requirements

- **Thermal and visible imager use only:** 8W, 24VAC +/- 10% or PoE IEEE 802.3af
- **NIR Illumination (if enabled):** 6W (24VAC required)
- **Window Heater (if enabled):** 20W (24VAC required)

Total power (with all functionality): 34W 24VAC (1.5 amps)

I/O Connectors

RJ45 (Ethernet), terminal blocks for RS422/RS232, power, audio out, relay out

✓ HD Color Imager

Imager: 2 MP (1/2.8-inch, Progressive Scan CMOS)

Aspect Ratio: 16:9 (Full HD 1080p, 1920 x 1080)

Dynamic Range: WDR >120db Multiple exposure

Imaging Area: Diagonal 6.46 mm (Type 1 / 2.8)

Minimum Illumination: 0.01 Lux @ F1.2

Frame Rate: Up to 15 FPS **Lens:** f1.6, fixed focus

NIR Illumination Range: (Dual 850nm LEDs)**

45M for HD260, 236, 355; 70M for HD220, 332, 324

**NIR Illumination not included with HD260

Day/Night: Controllable IR cut filter

Video Output: H.264, MJPEG

✓ Network

Ethernet Wired

100 RJ45, IEEE 802.3, 802.3i, 802.3u

Data Rate: 64 kbps to 8 Mbps

Operating Mode

100 Mbps - Full-duplex, Half-duplex

Protocols

DHCP, IPv4, HTTP, HTTPS, SSL, SLP, DNS, NTP, RTSP, RTP, TCP, UDP, IGMP, RTCP, ICMP, ARP

Configuration

Browser-based WebConfig or SightMonitor application

✓ Camera Enclosure

Weight: 2.1 kg (4.6 lbs.)

Dimensions

30.7 cm L x 14.7 cm W x 14.0 cm H

Enclosure: IP66

Mounting

3 x 1/4-20 UNC bolts

Powder Coat Rating

1000 sea-spray hours

✓ Environmental

Operating Temperature

-30° to +55°C (-22° to +131°F)

Safety Compliance

FCC Part 15, Class A, CE

Operating Relative Humidity

0 to 100%

Storage Temperature

-40° to +80°C (-40° to 176°F)

Storage Relative Humidity

0-95%, non-condensing

