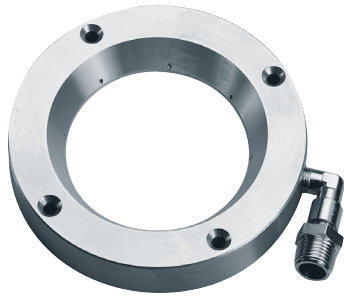


ONXAB1025B

AIR BARRIER WITH IR-PROOF GLASS



DESCRIPTION

Flange designed to create an air barrier in front of the glass, preventing the formation of dust deposits.

TECHNICAL DATA

MECHANICAL

Dimensions (ØxL): 154x21mm (6x0.8in)

Male input 1/2" GAS

Flange with 32 holes

System pressure: 6bar max

Recommended minimum pressure: 2bar

Example of application:

- Input air pressure 1bar, output air pressure 0.2bar, air flow rate 28m³/h
- Input air pressure 2bar, output air pressure 1bar, air flow rate 40m³/h
- Input air pressure 3bar, output air pressure 1.2bar, air flow rate 48m³/h
- Input air pressure 4bar, output air pressure 1.2bar, air flow rate 56m³/h
- Input air pressure 5bar, output air pressure 1.2bar, air flow rate 70m³/h
- Input air pressure 6bar, output air pressure 1.2bar, air flow rate 80m³/h

Tempered extra clear glass

- Thick: 6mm (0.24in)
- Operating temperature: 260°C (500°F) max, thermal gradient 108°C (226.4°F) max

Unit weight: 1.6kg (3.5lb)

PART NUMBER

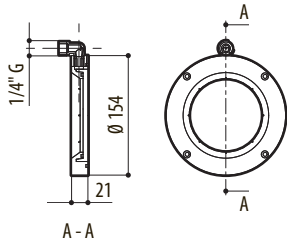
ONXAB1025B Air barrier with IR-proof glass included for NXW housings

PACKAGE

Model Number	Weight	Dimensions (WxHxL)
ONXAB1025B	1.8kg (4lb)	14x25.5x20cm (5.5x10x7.9in)

TECHNICAL DRAWINGS

The indicated measurements are expressed in millimetres.



ONXAB1025B

SUPPORT

Learn more and find additional documentation at pelco.com or email support@pelco.com for specific product support.



Jun 2024 || Rev 1

© 2024, Motorola Solutions, Inc. All rights reserved. MOTOROLA, MOTO, MOTOROLA SOLUTIONS, and the Stylized M Logo are trademarks or registered trademarks of Motorola Trademark Holdings, LLC and are used under license. Pelco, the Pelco logo, and other trademarks associated with Pelco products referred to in this publication are trademarks of Pelco, Inc. or its affiliates. All other product names and services are the property of their respective companies. Product specifications and availability are subject to change without notice.